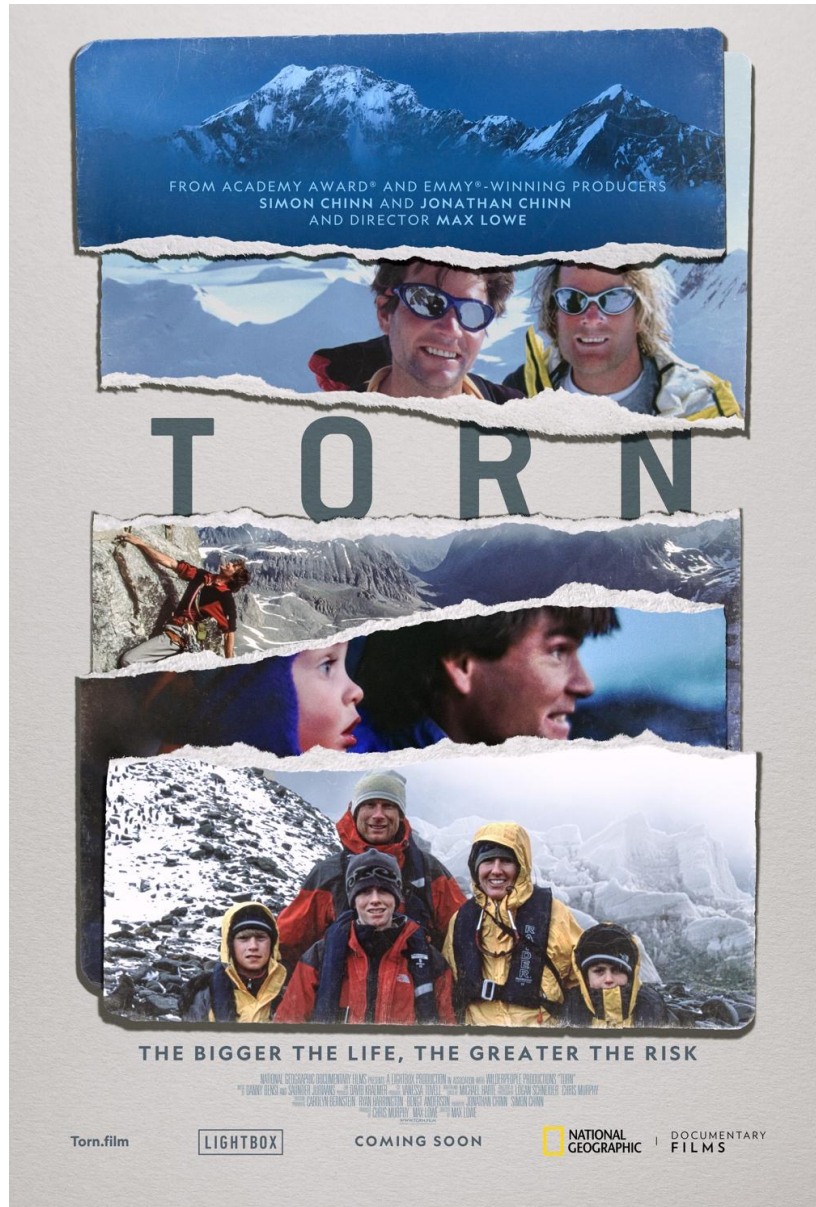




DOCUMENTARY FILMS

TORN

Directed by Max Lowe



TRT: 91:46

LANGUAGE: English

COUNTRY OF PRODUCTION: USA

YEAR OF PRODUCTION: 2020



DOCUMENTARY FILMS

PRESS CONTACTS

Full Picture

Lauren Schwartz | lschwartz@fullpic.com | 646.384.4694

National Geographic Documentary Films

Felicia Wong | fwong@clucollective.com | 310--962--8587

Marcus Cammack | marcus.cammack@natgeo.com | +1 424-333-4864 (International, ex-U.S.)

Kristin Montalbano | kristin.montalbano@natgeo.com

Chris Albert | chris.albert@natgeo.com

PHOTOS

Available [HERE](#)

WEBSITE

[Torn.film](#)

CLIPS

Available [HERE](#)

SOCIAL MEDIA

Facebook: [@natgeodocs](#)

Instagram: [@natgeodocs](#)

Twitter: [@natgeodocs](#)

Hashtag: #TornFilm

TORN**LOGLINE**

When world renowned climber Alex Lowe was tragically lost in a deadly avalanche, his best friend and climbing partner went on to marry his widow and help raise his three sons. This profoundly intimate film from eldest son Max, captures the family's intense personal journey toward understanding as they finally lay him to rest.

SHORT SYNOPSIS

Widely hailed as the greatest mountaineer of his generation, Alex Lowe was a towering figure in the world of outdoor sports. But he loomed even larger for his oldest son, Max, who was only 11 in 1999 when Alex was buried by an avalanche along with cameraman David Bridges while attempting to ski the north face of Mount Shishapangma in the Tibetan Himalaya. Seventeen years after their deaths, Lowe's and Bridges' bodies were found by two climbers attempting the same route, and in the following months, Lowe's family journeyed to the remote mountain to recover them. In the powerful and deeply moving new documentary **TORN**, director Max Lowe examines the long-buried feelings this unearthed for him and his family, including his mother, Jennifer; his younger brothers, Sam and Isaac; and his stepfather, Conrad Anker, Alex's climbing partner and best friend.

LONG SYNOPSIS

Widely hailed as the greatest mountaineer of his day, Alex Lowe was a hero to a generation of outdoor sports enthusiasts. Handsome, charismatic and almost supernaturally energetic, he found a kindred spirit and climbing partner in fellow alpinist Conrad Anker. One of the few family men in a perilous field typically reserved for young single men, Lowe struggled to balance his insatiable need to tackle risky ascents with his adoration and love for his wife, Jennifer, and their three young sons.

In 1999, Lowe, Anker and cameraman David Bridges were part of an expedition sponsored by The North Face to summit Tibet's 26,289-foot Mount Shishapangma. On a scouting day, Alex, David and Conrad were crossing a snowfield beneath the face of the peak when a massive avalanche struck. Anker survived, but Lowe and Bridges did not. Wracked with survivor's guilt, Anker reached out to offer his support to Jennifer and her sons, Max, 11, Sam, 7, and Isaac, 3. Soon after, he and Jennifer fell in love and were married, and Anker adopted the boys, whom he raised as his own.

In 2016, 17 years after their deaths, Lowe's and Bridges' bodies were discovered, melted from the glacier in which they were buried, by climbers Ueli Steck and David Goettler. Lowe's family journeyed to the remote Himalayan mountain to recover the men's remains. In the powerful and deeply moving new documentary **TORN**, director Max Lowe examines the long-buried feelings the discovery unearthed for him and his family members. Weaving together archival footage of Alex's spellbinding adventures, revealing home movies, and emotional interviews with Jennifer, Sam, Isaac and Conrad, Lowe challenges long-held family myths and questions his own beliefs as he creates an insightful examination of fatherhood, love, loss and resilience set against the high-stakes world of professional mountain climbing.

TORN is directed by Max Lowe ("Bare Existence," "Adventure Not War," "Sky Migrations"). The film is written and edited by Michael Harte ("Three Identical Strangers," "Don't F**k with Cats: Hunting an Internet Killer"). Producers are Chris Murphy ("We Are Blood," "The Art of Flight"), Max Lowe, Jonathan Chinn ("LA 92," "Black Sheep") and Simon Chinn ("Man on Wire," "Searching for Sugar Man"). Executive



DOCUMENTARY FILMS

producers are Carolyn Bernstein (“The Cave,” “Gracepoint”), Ryan Harrington (“A Place at the Table,” “Meet the Patels”) and Bengt Anderson (“Lost on Everest”). Directors of photography are Logan Schneider (“Drunk History,” “Helter Skelter: An American Myth”) and Chris Murphy. Composers are Danny Bensi and Saunder Jurriaans (“Ozark,” “The White Tiger”).

ABOUT THE PRODUCTION

Award-winning filmmaker and photographer Max Lowe had long considered the idea of making a documentary about his father, mountain climber extraordinaire Alex Lowe. “I thought it would be a way to get to know him better,” says Max, who was four days from his 11th birthday when his father died on Mount Shishapangma. “At one point I realized we had this huge trove of archives I had never looked at. But it was just kind of an idea in the back of my head, not something I thought would happen anytime soon but maybe later in my life.”

Then in April 2016, Max and his family received shocking news: The bodies of Alex and his fellow climber David Bridges had been found in the receding snow of Mount Shishapangma. “That news kind of just brought this whole thing back to the forefront of my life,” he says.

Although they live in the small mountain city of Bozeman, Montana, Max and his family have found themselves in the public eye for decades. Because of Alex’s unrivaled prowess as an explorer, his death in an avalanche became a worldwide news story. The family continued to make headlines when Alex’s closest friend and colleague, Conrad Anker, married his widow and became the boys’ stepfather.

The discovery of Alex’s body, 17 years after his death, once again thrust the Lowe-Anker clan into the spotlight. Until that time, Max says he had never really delved into the impact his father’s death had on him and his family. “When you’re a kid and you live a story like this, you never really think to examine it; it’s just your reality,” he explains. “I think that’s often the case when difficult things happen within families. Sometimes you just let things lie because you want to keep the peace and maintain the status quo. It’s easier just not to talk about things.”

In May 2016, the family addressed the news of the discovery at a press conference at Mountainfilm, a documentary film festival in Telluride, Colorado, and soon after announced plans to travel to Tibet to retrieve Alex’s remains.

“Around that time a friend and mentor of mine reached out and suggested that if I wanted to tell a story about Alex and my relationship with him, this trip should be a part of that,” recalls Max. “So after talking with my family, we decided we would film that trip, which was the first step towards what **TORN** would become: documenting my own experience on this journey I never imagined would happen.”

ASSEMBLING THE TEAM

After the physically and emotionally taxing expedition to Tibet, Max became acutely aware of the trauma still lingering below the surface for his parents and now adult brothers. “The act of going there gave me the impetus and the platform and the drive to dig into this stuff that I hadn’t had up until that point.”

That autumn, Max made a presentation about the trip and the complexity of his feelings around Alex's life and death at the HATCH Big Sky Ideas Festival. "It really struck a chord with people," he says. After that presentation and weekend at the festival, Max was approached by filmmaker Chris Murphy. "I showed him some more of the materials I had shot in Tibet and some of the archives of Alex, and right then and there he said, 'I'll help you make this movie if you will have me.' I definitely couldn't have done it without him, he gave me the confidence and tools to move the whole project forward from beginning to end."

Murphy, who had a background in action sports filmmaking, signed on as a producer. In the following years, the pair began shooting preliminary interviews with Max's family and digging deeper into the extensive archival footage. Eventually, they went to the Sundance Film Festival to pitch the idea for the film.

In the winter of 2019, they entered into discussions with National Geographic, who agreed to finance the completion of the film. "Having NatGeo's resources allowed us to kick it into high gear and we started going out and finishing the rest of the documentary that we had begun to shoot," says Max.

National Geographic also suggested Lowe and Murphy team up with Los Angeles-based production company Lightbox, headed by two-time Academy Award® winner Simon Chinn ("Man on Wire," "Searching for Sugar Man") and Academy Award nominee Jonathan Chinn ("Black Sheep," "LA 92"). "Lightbox brought the infrastructure and knowledge needed to manage a project of this size and gave us a home base while we were working on it for the last couple years," says Max. "It was an awesome partnership."

MORE THAN A HERO'S JOURNEY

Although the story of Alex's death and its aftermath had been told before in books, magazines and even films, **TORN**, says Max, was his opportunity to tell it from his unique perspective.

Previous accounts include the 2007 short documentary "The Endless Knot," directed by Michael Brown, a member of the deadly Shishapangma expedition. Jennifer wrote the book "Forget Me Not: A Memoir," about her life with both Alex and Conrad, which was published in 2008. Alex's death and its impact on Conrad were touched upon in "Meru," the first documentary feature by "Free Solo" co-directors Jimmy Chin and Elizabeth Chai Vasarhelyi.

Max remembers attending the premiere of "Meru" at the 2015 Sundance Film Festival with his family. "There was all this footage of Alex that I hadn't seen in probably 15 years or so," he says. "Seeing someone else telling the story of my father's life and our family's life kind of lit a fire in me. Like, people think they know our story, but there's a lot more human complexity to it than just a hero's journey."

As **TORN** makes clear, Max's decision to move forward with the film was met with some trepidation by his family members. "I don't think any of them would have chosen to dredge all this up, but they saw this was a journey I needed to take," he observes. "So they agreed to do it, probably mostly for me. And they probably regretted it at certain stages of the making of the film — and might still regret it, especially when it comes out and our story is once again out there for the whole world to see. We'll see."

Max says there were times when even he wondered if he was on the right path. “But since our family story was already in the mainstream — and had been my entire life — stepping up and taking some control of it felt right, and like something I needed to do.”

THE MAGIC OF THE CAMERA

As he began probing his family members about their memories and experiences, Max discovered that being behind the camera allowed him to broach difficult subjects more easily — and allowed his interviewees to answer more candidly than they might have under different circumstances. “It was beautiful because it felt like it gave me this strange power to tap into these topics in a way that I had never been able to before,” says Max. “For instance, I can’t imagine when else I would have sat down with my mom and had her read through these intimate letters Conrad and Alex had sent her.”

Max chose to film his interview subjects in extreme close-ups and later added subtle musical accompaniment that highlights a sense of soul-searching and revelation. The contemplative mood of those scenes provides a sharp contrast to the sweeping vistas and extreme athleticism on display in the film’s archival footage. “We wanted to make sure this didn’t feel like a climbing film,” says the director. “It’s rooted in a climbing story, but as far as the interviews go, I really wanted to portray this intimacy and closeness with tight shots where you can see the emotion in my family members’ faces and feel like you’re right there with us as we’re having these conversations for the first time.”

One of the most moving moments of the film comes when Max and Anker engage in a long-overdue conversation about the strains in their relationship and Anker, a superstar climber in his own right who led The North Face climbing team for 26 years, opens up about feeling as though he still lives in the shadow of his friend Alex. “I thought Conrad was going to be a lot tougher to get into some of this stuff with — he’s a bit more reserved as a person in general — but he just kind of saddled up,” says Max. “I had some of the deepest conversations I’ve ever had with him in the process of making this film.”

Max says when he first started talking about making **TORN**, there were people who suggested that the story of his family had already been well told. “It was like, what more could there be to say? Well, Conrad’s insecurities are part of that. The pain that he still holds in, having to fill those shoes. Talking about it with him for the first time was extremely powerful. And realizing how much and for how long he’s been coping with it and wanting to be there for us — and also for Alex.”

Max had originally planned to sit for a formal interview in the film himself but eventually decided against it. He says he was inspired by films including Sarah Polley’s “Stories We Tell” and Bing Liu’s “Minding the Gap.” “In those films, you get to know the filmmaker by what you see through their eyes rather than seeing them in front of the camera.”

Max does appear on screen in a few pivotal scenes, however. In one particularly poignant moment, he tells the story of a birthday card from Alex that arrived after he had died — and his belief at the time that it proved his father was still alive.

TORN is written and edited by Michael Harte, who received an Emmy® nomination for his work on a family drama of a different kind: the acclaimed documentary feature “Three Identical Strangers.” Max says Harte, like Murphy, was integral to making the film what it is. “Michael and I had a call early on in the development process and he struck me as someone I could spend a lot of time with — which I think is as important in finding an editing partner as credentials and past work. In part, because we became so close, he was able to bring an amazing amount of perspective to the process. Unlike past projects where I’ve been able to be more objective, on this film I found myself worrying about how my family was going to react to decisions we made in the editing room. Being able to walk through those with Michael made a huge difference.”

The film also benefits from a score by composers Danny Bensi and Saunder Jurriaans, whose music has underscored such hit dramatic series as “Ozark,” “Fear the Walking Dead” and “The Outsider,” as well as numerous documentary features, including “The Scheme” and “Tell Me Who I Am.”

“Lightbox had worked with Danny and Saunder in the past, and they had an amazing resume — and I really liked their work on the National Geographic film ‘LA 92,’” says Max. “They were both super excited at the prospect of coming in to craft this feeling we wanted to portray.”

Like the film’s visual palette, the music artfully treads a line between an intimate family drama and grand adventure story. To emphasize the emotional components of both the quietly introspective interviews and the vast landscapes and intense energy of Alex Lowe’s ascents, the composers employed a full orchestral score, recorded by the FAME’S Project Orchestra in Macedonia. “I thought the archival footage, especially those huge vistas, begged for that sort of musical feel,” explains Max. “We wanted to give people the feeling of what it was like to be out in those inspiring and magical landscapes that drew Alex away from us and later pulled Conrad away from us as well.”

THE POWER OF VULNERABILITY

Max says that in making **TORN** he achieved his goal of getting a fuller, more honest picture of who his father was and how his family coped with the aftermath of Alex’s death. Max came to understand that, for many years, his mother carried the heavy burden of trying to protect him and his siblings by shaping the narrative around Alex’s death, both publicly and privately. “She wanted to portray him in a specific way to us,” says the director. “And part of the process of making this film was me questioning some of those ideas. That was especially hard for her. But it was also hard for both my brothers because they were so young when Alex died and the stories people tell about him are mostly what informs their image of who he was.”

In the end, however, Max believes the film has brought his family closer together. “I had conversations with each of my family members in the process of making the film that we had never had before,” he says. “And as hard as it was, as painful as it was, I feel like having those sorts of conversations is always for the best in the end.”

Max says he hopes audiences will come away from the film more willing to tackle tough topics with their own families and past traumas. “I hope they see that vulnerability is one of the most powerful feelings

you can harness,” he says. “And that even though it’s scary and daunting to face these things, it’s worth it. I feel like most of us don’t give ourselves enough credit, and we have more ability than we think to be our own heroes when it comes to addressing difficult, traumatic events in our pasts that whether we recognize it or not have shaped our lives.”

ABOUT THE FILMMAKERS

MAX LOWE (director) is a filmmaker and photographer known for the short films “Slacker,” “Adventure Not War,” “Sky Migrations” and, most recently, “Bare Existence.” He has produced commercial still and film content for brands such as The North Face, Calvin Klein and Toyota. Lowe has been on shoots taking him up Alaska’s Inside Passage, into the deserts of the Sahara and to the high peaks of the Himalaya, as well as journeying to Antarctica by sea on three separate expeditions.

From a young age, Lowe was exposed to the magic of traveling to and observing some of the world’s most remote cultures and environments. Taking up storytelling as his mission, he received a National Geographic Young Explorers Grant in 2012. Since then, he has shot and produced for The Atlantic, National Geographic Adventure and National Geographic magazines. In addition to being seen on the BBC and in the IMAX film “National Parks Adventure,” Lowe has appeared in publications such as Science magazine, Men’s Journal and Outside magazine.

From his backyard in Bozeman, Montana, to the far corners of the globe, Lowe has witnessed countless extraordinary moments, wildlife encounters and interactions with people from vastly different walks of life. It is from these experiences that his passion to capture stories and bring them to the world stems.

CHRIS MURPHY (producer) is an award-winning Filipino American filmmaker with an established history as a director, producer and cinematographer in the brand content and entertainment industry. Murphy grew up in Great Falls, Montana, where he spent his time roaming the streets and concrete surfaces on a skateboard while incessantly following his friends around with a Hi8 DV camera. His humble beginnings of documenting familial characters and editing the footage on a homemade linear VHS tape-to-tape system evolved into a full-blown obsession that led him to a successful career in filmmaking.

Murphy has directed and produced brand content for Red Bull, Leica Camera, Vans, Yeti Coolers, Arc’teryx and Land Rover. His commercial work paved a solid foundation for his thoughtful, creative process and aptitude for powerful storytelling. He went on to work as a cinematographer on Spike Jonze’s skate film “Pretty Sweet,” feature documentary “Waiting for Lightning,” Nat Geo Wild’s “America the Wild,” and he recently finished shooting on a BBC series. Chris has created intro sequences for the Red Bull films “Art of Flight” and “The Fourth Phase,” and most recently directed and produced the award-winning snowboard film “Depth Perception.”

Murphy’s curiosity and empathetic nature, coupled with his genuine interest in people, are evident in the way he connects with characters through his camera. His innate ability to capture moments of truth and observing narratives that unfold through his lens is what drives him to continue documenting deserving and vulnerable human stories. He lives and adventures in Bozeman, Montana, with his wife, two children and two dogs, and he is currently producing a personal untitled documentary film project.



DOCUMENTARY FILMS

JONATHAN CHINN (producer) is an Academy Award-nominated and double Emmy Award-winning producer and co-founder of Lightbox, a multinational media company headquartered in London and Los Angeles, focused on creating high-quality nonfiction programming for film, television and digital platforms. He and his cousin, double Academy Award-winning producer Simon Chinn, founded Lightbox in 2014.

Since its formation, Lightbox has produced many notable projects, including documentary films “Atari: Game Over” and “The Thread” for Xbox Entertainment Studios, an ESPN 30 for 30 film about the 2006 Duke Lacrosse scandal entitled “Fantastic Lies,” “Gypsy’s Revenge” for Investigation ID. They also produced several series for both the U.K. and U.S. markets, such as “The Traffickers” and “Food Exposed” for Fusion, “Inside British Vogue” for BBC, “The Runner-Up” for Esquire, “War Child” for Channel 4 and the groundbreaking series “Captive” for Netflix.

Lightbox’s recent projects include the theatrical feature “Whitney,” directed by Academy Award winner Kevin Macdonald, which premiered at the Cannes Film Festival; National Geographic’s Emmy-winning and Oscar®-shortlisted film “LA 92”; the Oscar-nominated documentary short “Black Sheep”; and “Untouchable,” the company’s most recent feature doc about Harvey Weinstein, which premiered at Sundance in 2019 in advance of its launch on BBC Two and Hulu; “Diagnosis,” the groundbreaking Netflix Original documentary produced by Lightbox in partnership with Scott Rudin Productions and The New York Times; and “Tell Me Who I Am,” a feature documentary for Netflix about memory, secrets and unbreakable family bonds, which premiered at the 2019 Telluride Film Festival.

Prior to co-founding Lightbox, Jonathan was one of the most respected nonfiction television showrunners in the U.S., winning an Emmy for “American High” (Fox/PBS) and the prestigious Television Academy Honors for “30 Days” (FX), the latter of which went on to become FX’s highest-rated unscripted series. Other producing credits include “Kid Nation” (CBS), “Push Girls” (Sundance), and “Hotel Hell” (FOX).

SIMON CHINN (producer) is a double Oscar-winning producer who is responsible for some of the most successful feature documentaries of recent years.

In 2005, he conceived and produced his first theatrical feature documentary, “Man on Wire.” It went on to win over 40 international awards including the BAFTA for Outstanding British Film and the Academy Award for Best Documentary Feature. He followed that up with a string of multiple award-winning feature documentaries, including “Project Nim,” “The Imposter,” “The Green Prince,” “Garnet’s Gold,” “Bolshoi Babylon” and “Searching for Sugar Man,” which also won a BAFTA and an Academy Award and made over \$20 million at the international box office. In 2015 he teamed up with his old school friend Louis Theroux to produce “My Scientology Movie,” Theroux’s first theatrical doc. It grossed £1.1 million at the U.K. box office, making it one of the highest-grossing feature docs of all time in the U.K.

Simon launched Lightbox in 2014 with his Los Angeles-based cousin, Emmy-winning producer Jonathan Chinn. Focused on producing high-end nonfiction, including series, feature documentaries and shorts, for multiple platforms, Lightbox has completed major projects for Xbox Studios, Netflix, Fusion, Esquire Network, Channel 4, BBC, FX, National Geographic and ESPN. Its feature doc on the 1992 Los Angeles riots, “LA 92” for National Geographic, won a primetime Emmy and was shortlisted for an Academy Award. Their documentary short “Black Sheep,” made with The Guardian, was nominated for an Academy Award in 2019. Lightbox’s most recent projects include “Diagnosis,” a series for Netflix produced in partnership with Scott Rudin and the New York Times; “Untouchable,” a feature doc about the Weinstein scandal for



DOCUMENTARY FILMS

Hulu and the BBC, which launched at the Sundance Film Festival; and “Tell Me Who I Am,” a feature doc for Netflix which launched at the Telluride Film Festival. Its forthcoming feature doc “TINA,” the only feature documentary to be made with Tina Turner’s full participation, was released theatrically around the world — and then on HBO and Sky — earlier this year. Lightbox has other projects in production with FX, National Geographic, Showtime, Netflix, HBO, Discovery, Amazon, Sky and the BBC.

Simon is a member of the Academy of Motion Pictures Arts and Sciences, sits on the BAFTA Film committee as an elected member, and is a trustee of the Grierson Trust.

FILM SUBJECTS

JENNIFER LOWE-ANKER is the president and acting director of the Alex Lowe Charitable Foundation (ALCF), which she established in 1999 to advocate for indigenous mountain people around the globe. In 2008, Mountaineers Books published her “Forget Me Not: A Memoir,” chronicling her life with Alex Lowe and Conrad Anker in the mountains of the world. It won the National Outdoor Book Award for literature that year.

Lowe-Anker first made her mark as an artist after graduating with a B.A. from Montana State University in 1987. Her paintings have been shown in galleries around the West since 1990. Combining landscapes, animals and people of her native Montana, Lowe-Anker’s whimsical images showcase a passion for the wild that she advocates to protect.

Lowe-Anker was married to mountaineer Alex Lowe from 1982 until his death in 1999. She worked as an artist and was the primary caregiver for their three sons, Max, Sam and Isaac. She married Conrad Anker in 2001.

In 2004, in partnership with the ALCF and Anker, she founded the Khumbu Climbing Center (KCC) in Phortse, Nepal, to educate indigenous Sherpa and Nepali climbers. It has operated for over 15 years, training the majority of Nepali climbers now working on Everest. KCC moved into an earthquake-resistant facility in Phortse in 2019.

CONRAD ANKER has been pushing the limits of mountaineering for the last 30 years, evolving into one of the best alpinists from the U.S. The Bozeman, Montana, based father of three is one of the most prolific explorers and alpinists alive today. He is equally at home in Antarctica, the Himalayas, or on his home ice in Hyalite Canyon in southwestern Montana.

In 2011, Anker notched the long-awaited first ascent of the Meru Shark’s Fin in India, with partners Jimmy Chin and Renan Ozturk. This led to the Sundance-winning documentary “Meru.” He has climbed Everest three times, including a 2012 trip with National Geographic to commemorate the 50th anniversary of the first American ascent of the mountain. On his most famous Everest climb in 1999, Anker discovered the remains of George Mallory, one of the two British climbers who died attempting Everest in 1924, helping to shed more light on one of mountaineering’s most famous mysteries. In more than 25 years of expeditions to Nepal, Anker and his wife, Jennifer Lowe-Anker, have developed deep relationships with the Sherpa people of the Khumbu Valley of Nepal. The couple founded the Khumbu Climbing Center in Phortse, Nepal, which provides a variety of safety training courses to high-altitude workers.

Anker continues a deep appreciation for wild places passed on from his father and grandfather, who hailed from Big Oak Flat, California, just outside Yosemite National Park. Anker had climbed Mount Rainier by the time he was 16. He met his first climbing mentor, the iconic climber Mugs Stump, while studying at the University of Utah in Salt Lake City and working in a mountaineering store. Anker, a part-time carpenter, and the late Alex Lowe — his climbing partner and best friend—went on to become climbing’s rock stars in the ’90s, setting speed records in the Himalayas and Antarctica.

Though true alpine routes have been his forte, Anker’s résumé also includes big-wall first ascents on El Capitan and first free ascents in Zion National Park. In 1997, alone, he completed first ascents in Antarctica, Pakistan’s Karakoram and on Yosemite’s El Capitan.

At home, Anker serves on the boards of Protect Our Winters, the American Himalayan Foundation and the Alex Lowe Charitable Foundation.

SAM LOWE-ANKER is an up-and-coming freelance filmmaker based in Bozeman, Montana. Born the middle child to Jennifer and Alex Lowe, he knew a life of adventure from an early age. When Alex passed away in an avalanche in 1999 and his friend and climbing partner Conrad Anker stepped in, Anker became the only father Sam would ever truly know.

Alongside his two brothers, Sam has continued a legacy set down by his parents to lead a life driven by passion and curiosity. He has also defined himself on his own terms, going on to graduate with honors from the film school at Montana State University and forge a creative image all his own.

Sam has mastered the media form of stop-motion animation, which he began tinkering with at a young age by making short films with digital cameras and Lego. In recent years, he has directed and produced content with entities such as Outside Online Vans, Finnleo hot tubs and Bridger Bowl Ski Resort, while also working as an assistant cameraman on commercial pieces for brands such as Ford, Facebook and Levi’s.

ISAAC LOWE-ANKER is a senior at Western Washington University in Bellingham, where he is pursuing a bachelor’s degree in graphic design. Isaac was born and raised in Bozeman, Montana, where alongside his brothers he discovered a passion for adventure and creativity. The youngest of three sons raised by Jennifer Lowe-Anker, Conrad Anker and Alex Lowe, Isaac has grown up in the fold of his wanderlust family, traveling the globe and finding perspectives and insight seldom seen by a 23-year-old. Growing up with the intertwined stories of his family and Alex Lowe’s passing in 1999, Isaac has both continued their legacy and found a path all his own.

Even as Isaac has been pushing to complete his degree, he has also stepped into the role of a professional graphic designer working with brands such as The North Face, Quicksilver and United By Blue. He has provided graphic design and illustration for several documentary shorts, including “Depth Perception,” “Ode to Muir: The High Sierra” and “Sky Migrations.”

ANDREW MCLEAN specializes in steep skiing remote locations and is widely considered America’s greatest ski mountaineer living today, with first descents on all seven continents — places such as Baffin Island, Iran and Morocco. He is a veteran of 20 expeditions and hundreds of first descents. Powder magazine recently voted McLean “One of the Greatest Skiers of Our Time.” McLean currently lives in Park City, Utah, and spends his winters skiing the Wasatch daily.

DAVID GOETTLER has explored frozen summits everywhere from Pakistan to Patagonia, but his greatest passion is for the harsh and beautiful high-altitude terrain of 8,000-meter mountains. It is this feeling of being exposed and vulnerable on a mountain that makes Goettler feel most alive. He has already conquered five of the fourteen 8,000-meter peaks on Earth, reaching the summits of Gasherbrum II (8,035 m), Broad Peak (8,051 m), Dhaulagiri (8,167 m), Lhotse (8,516 m) and Makalu (8,481 m), while also ascending to 8,200 m on K2 (8,611 m).

During an expedition to Shishapangma, the 8,000 m mountain in China, Goettler discovered Alex Lowe's body exposed by the melting ice. He is a close friend and mentee of avalanche survivor Conrad Anker.

JIMMY CHIN is a professional climber, photographer and Academy Award®-winning film director. The American has organized and led numerous climbing, ski-mountaineering and exploratory expeditions to China, Pakistan, Nepal, Greenland, Tanzania, Chad, Mali, South Africa, Borneo, India and Argentina. His achievements include climbing and skiing Mount Everest from the summit, making first ascents of big walls and alpine towers in the Karakoram Mountains of Pakistan and the Garhwal Himalayas of northern India, and crossing the Changtang Plateau in northwestern Tibet on foot.

BILL BELCOURT is a paraglider and hang glider living in Salt Lake City, Utah. He was a long-time friend of Alex Lowe and in 2016 joined the Lowe-Anker family on their trek in Shishapangma, China, to retrieve Alex's body.

ALICE PHINNEY is a longtime friend of Jennifer Lowe-Anker, spending her formative years of climbing with Jennifer and Alex Lowe. She witnessed their love grow as well as Jennifer's grieving process after losing Alex in 1999. They are still friends today.

MICHAEL BROWN is a veteran adventure filmmaker who has won more than 30 international film festival and industry awards. Brown was the filmmaker and cinematographer who captured footage of the 1999 Shishapangma expedition when an avalanche swept over Alex Lowe, David Bridges and Conrad Anker, leaving Anker as the sole survivor. Brown finished the film as a tribute to Lowe and Bridges.



DOCUMENTARY FILMS

CREDITS

In memory of
Alex Lowe, David Bridges,
& all those lost to the mountains.

Directed By
MAX LOWE

Written and Edited by
MICHAEL HARTE

Produced by
CHRIS MURPHY
MAX LOWE

Producers
JONATHAN CHINN
SIMON CHINN

Executive Producers
CAROLYN BERNSTEIN
RYAN HARRINGTON
BENGT ANDERSON

Music By
DANNY BENSI AND SAUNDER JURRIAANS

Directors of Photography
LOGAN SCHNEIDER
CHRIS MURPHY

Co-Producer
VANESSA TOVELL

Line Producer
DAVID KRAEMER

Director of Post Production
TREVER FONG

Post Production Supervisor
DAVID WEITZEL

Archive Producer
ANDY ZARE



DOCUMENTARY FILMS

Production Manager
AL NOWICKI

Production Coordinator
STEPHEN WOLOSZYN

Online Editor
JOHN DENTLINGER

Assistant Editors
CORY MARCIEL
HILARY BYRNE

Additional Cinematography
MAX LOWE
SAMUEL LOWE-ANKER
MICHAEL PAUL JONES
ANDREW ACKERMAN

Assistant Camera
JOHN SWEENEY
CHEMA DOMENECH

Sound Recordists
WILLIAM LAKE SPRINGSTEAD
KARL SWINGLE
LINCOLN TERHARK
JOSH MILLER
ZACH JOHANESON

Gaffers
MICHAEL JEZAK
ANDREW THIE

Executives in Charge of Production
CAROLYN SPERRY LEWIS
ERIKA SCHROEDER

UK Production Manager
HELENA LEWIS

Associate Producer
LAURA YALE

Story Consultant
VICKIE CURTIS



DOCUMENTARY FILMS

Executive Assistants

ERIN CUTLER
ELLA GOSLING

Production Assistants

EMILIANO LOPEZ
ERIC HINSPERGER
BILLY CIRULLO
CHRISTA LYNN LUCKENBACH
ERIC FULCHER

Visual Effects, Animation and Design by

ZACH JOHANESON
ISAAC LOWE-ANKER

Sound Designer

MAX BRAVERMAN

Additional Sound Design by

HENSZEY SOUND

Music Supervisor

GARY WELCH

Post Production Finishing by

TECHNICOLOR

Senior Colorist

DOUG DELANEY

Colorist

SANTIAGO PADILLA

Online Editor

MOLLY NOLAN

Sound Mixer

MARCIN CHOJNOWSKI

Producer

LEVI HAWKINSON

Additional Music by

JAMES NEWBERRY
TREY TOY



DOCUMENTARY FILMS

JORDI NUS

JUAN HUICI

Music Mixed by

PHIL MCGOWAN

Music Mixed at McGowan Soundworks, Ltd

Performed by

F.A.M.E'.S PROJECT ORCHESTRA

Conductor

OLEG KONTRADENKO

Solo Violin by

LISA LIU

Studio

F.A.M.E'.S STUDIO, MACEDONIA

ProTools Engineer

TEODORA ARSOVSKA

Recording Engineer

ALEN HADZI-STEFANOV

Contractor/Session Producer

F.A.M.E'.S PROJECT

Production Accounting

MEDIA SERVICES PRODUCTION ACCOUNTING

SHERRI WHITE

Production Legal Services

SMITHDEHN, LLP

RUSSELL SMITH

TONY DOHERTY

Songs

'SWEET EMOTION'

Performed by Aerosmith

Written by Tom Hamilton and Steven Tyler

Published by BMG Rights Management UK Ltd., a BMG Company.

Courtesy of Sony Music Entertainment

Licensed by Sony Music Entertainment UK Limited

'BITTERSWEET'



DOCUMENTARY FILMS

Performed Big Head Todd and the Monsters

Written by Todd Mohr

Published by BMG Rights Management UK Ltd., a BMG Company.

Courtesy of Warner Music UK Ltd.

'IT'S BEGINNING TO LOOK LIKE CHRISTMAS'

Performed by Alex Lowe

Written by Meredith Willson

Courtesy of Frank Music Corp. and Meredith Willson Music, LLC (ASCAP)

'HEAVENLY PEACE'

Arranged by James Anthony Mc Millen

Published by Megatrax/Marquee Music

Music provided Courtesy of Megatrax

'MANCHESTER'

Performed by Kishi Bashi

Written by Kaoru Ishibashi

SPECIAL THANKS

JENNIFER LOWE-ANKER	TED LOWE	AIDAN HALEY
CONRAD ANKER	ANDY LOWE	ELLIOT ROSS
SAMUEL LOWE-ANKER	WALLY & HELGA ANKER	MATT SHARKEY
ISAAC LOWE-ANKER	KIM ANKER	SCOTT BALLEW
BRITTNEY MURPHY	DENISE ANKER	TAYLOR JOHNS
KYRAN MURPHY	STEVEN ANKER	GORDON WILTSIE
CHLOE MURPHY	CAMILLA DALY	MICHAEL GRABER
KAYLA BEDEY	PAULA DALY	JOHN WILCOX
TOTSYE MADSEN	JAN DALY	CHONGBA SHERPA
BUTCH MADSEN	PAUL DALY	NORBU
MADDY & JILL MADSEN	CAROL DALY	PANURU & PASANG DIKKI
HAILEY HAYNES	JAKE DALY	SHERPA
BRADY HAYNES	MURRAY JOURNEY	KARMA TSERING SHERPA
JIM & DOTTIE LOWE	MARTIN SCHOELLER	LAKPA SHERPA
CLARE O'CONNELL	LYDIA PADDON	COREY RICH
MARY & JIMMY HARTE	DENISE PADDON	DOUG CHABOT
ALICE PHINNEY	MOLLY PADDON	JACK TACKLE
BILL BELCOURT	ELISE LOWE	JON KRAKAUER
ANDREW MCLEAN	ALEX LOWE	TIMOTHY TATE
MICHAEL BROWN	ERIN KROZEK	RICK & JENNIFER RIDGEWAY
JULIA BUONANNA	DOMINIQUE ANDREWS	TOPHER & KIM GAYLORD
JIMMY CHIN	BRIAN LOVETT	STAN PRICE
CHAI VASARHELYI	JEFF HASLER	SINHUE XAVIER
TOM & MERIDETH BROKAW	20/20 CAMERA	DAWA YANGZUM SHERPA
DANIEL BRIDGES	RENAN OZTURK	JIBAN GHIMIRE



DOCUMENTARY FILMS

FAMILY OF DAVID BRIDGES	TAYLOR REESE	STEVE & JULIE RENDLE
DARRYL MACIAS	MICHAEL AISNER	YARROW KRANER
JOEL KOURY	DAVID HOLBROOK	CEDAR WRIGHT
MARK HOLBROOKE	DA NURU SHERPA	ALEX GAPPA
KRIS ERICKSON	MINGMA SHERPA	MAX BAUCUS
HANS SAARI	JIBAN GHIMIRE	MELODEE HANES
KENT HARVEY	FOREST WOODWARD	BOB MCCAULEY
JOANNE DORNAN	JOEY SCHUSLER	KURT MARKUS
DAVID TAYLOR	MARK TWIGHT	LEROY BROWN, MAYA, & JUNO
JOSIE MURPHY	ARIEL ZEMLIKA	
MICHELLE & JENNY FLEMING	CHINESE MOUNTAINEERING ASSOCIATION	

Archive Material Provided Courtesy of
ANSON FOGEL, CAMP 4 COLLECTIVE, CHRIS FALKENSTEIN, GORDON WILTSIE
JOHN WILCOX, MARK HOLBROOK, MARK TWIGHT, LITTLE MONSTER FILMS
NATIONAL GEOGRAPHIC CREATIVE, NBCUNIVERSAL ARCHIVES

Other Archival Material
ABC NEWS, CNBC, DEIRDRE EITEL, FOX7 BOZEMAN MT, KOFLACH, KTVM BUTTE MT
MICHAEL GRABER, NATIONAL GEOGRAPHIC MAGAZINE, THE NORTH FACE
OUTSIDE MAGAZINE, SPORTS EXPRESS

For NATIONAL GEOGRAPHIC STUDIOS

Director, Development
ERIN KROZEK

Director, Production Management
DOMINIQUE ANDREWS

For NATIONAL GEOGRAPHIC DOCUMENTARY FILMS

Business & Legal Affairs Executive
TIFFANY K. LECLERE

Senior Vice President, Production Management
MICHELLE UPTON

Senior Unit Manager
NICOLE MILOS

Research Manager
MARK LEVENSTEIN

Post Production



DOCUMENTARY FILMS
MATTHEW CONLON

Communications
CHRIS ALBERT
KRISTIN MONTALBANO

A WILDERPEOPLE AND LIGHTBOX PRODUCTION FOR
NATIONAL GEOGRAPHIC DOCUMENTARY FILMS

© 2020 NGC NETWORK US, LLC
All Rights Reserved